

Notes

- Traffic Flow Data source. Traffic Study Prepared by TPI Ltd.

LEGEND

Study Area Outline —

Corridor 1 — N1**

Corridor 1A — N2**

Corridor 2 — N3**

Corridor 2A — N4**

Corridor 2B — N5**

Corridor 3 — N6**

Corridor 4 — N7**



ROSCOMMON COUNTY COUNCIL

*Courthouse,
Roscommon.
Phone: 090-6637100*

*Majella Hunt
Director of Services*

NATIONAL ROADS DESIGN OFFICE ROSCOMMON

*Racecourse Rd.
Roscommon.
Phone: 090 6627004*

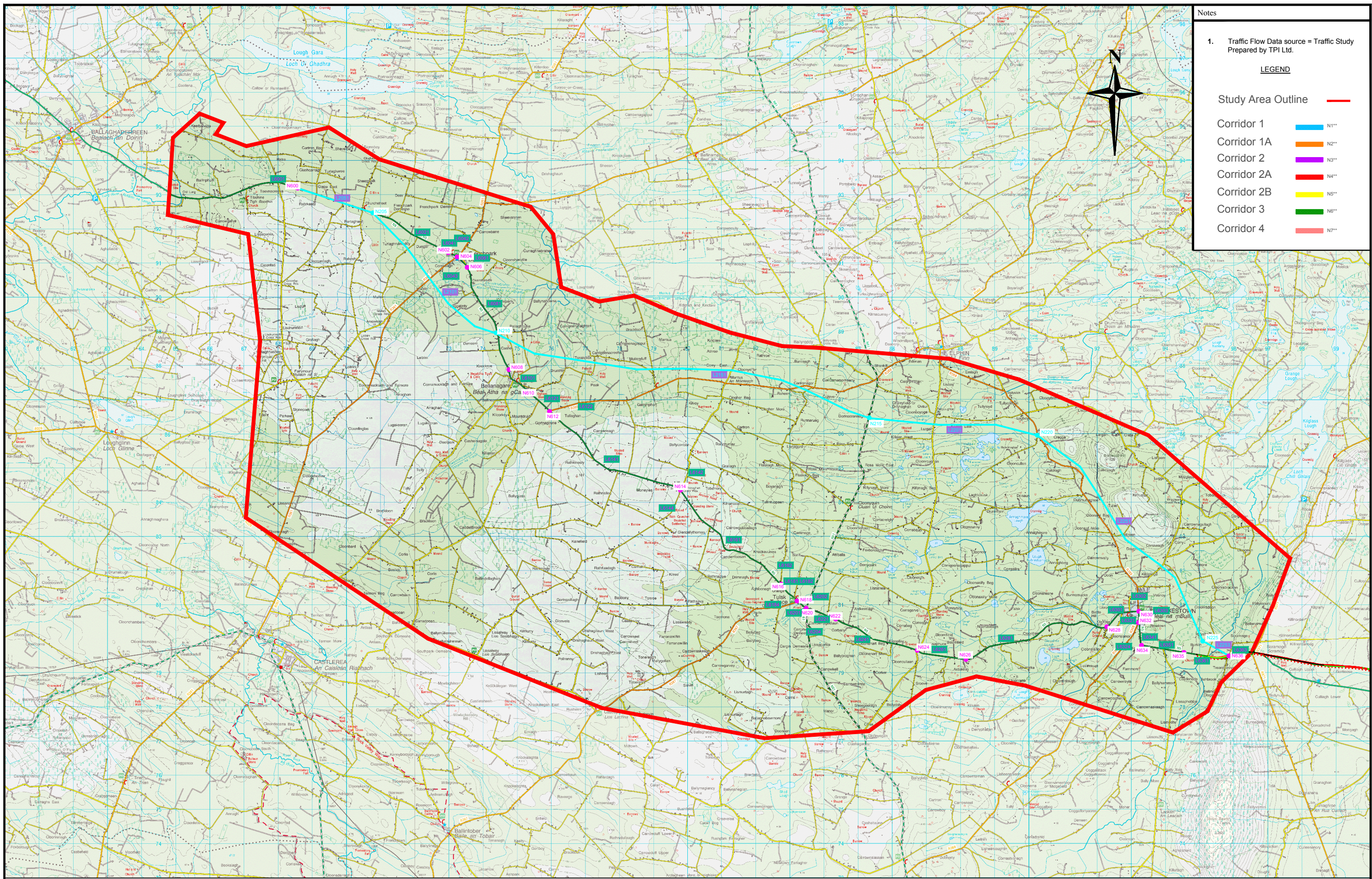
*Martin Curley, B.E., C.Eng.,
Senior Engineer.*

Rev	Description	Checked	Approved	Date
1	Post Peer Review			28/02/08

Project No. & Desc.
RN04250 N5 Strategic Corridor-Route Selection Report

Drawing Title
Economic Assessment - COBA Network - Option 1

File Folder P:\Proj2004\4155\4155-1\BEG\04250\101 - RSR Drawing\001 December 2007\RN04250-12-369 COBA Network.rdg	Drawing No.: RN04250-12-369	Layout 1 of 7
Drawn Mark Keaveney	Scale V N/A	Date December 2007
	Scale H 1:100000	



Notes

1. Traffic Flow Data source = Traffic Study Prepared by TPI Ltd.

LEGEND

Study Area Outline —

Corridor 1 — N1**

Corridor 1A — N2**

Corridor 2 — N3**

Corridor 2A — N4**

Corridor 2B — N5**

Corridor 3 — N6**

Corridor 4 — N7**



ROSCOMMON COUNTY COUNCIL



Courthouse,
Roscommon.
Phone: 090-6637100

Majella Hunt
Director of Services

NATIONAL ROADS DESIGN OFFICE ROSCOMMON



Racecourse Rd.
Roscommon.
Phone: 090 6627004

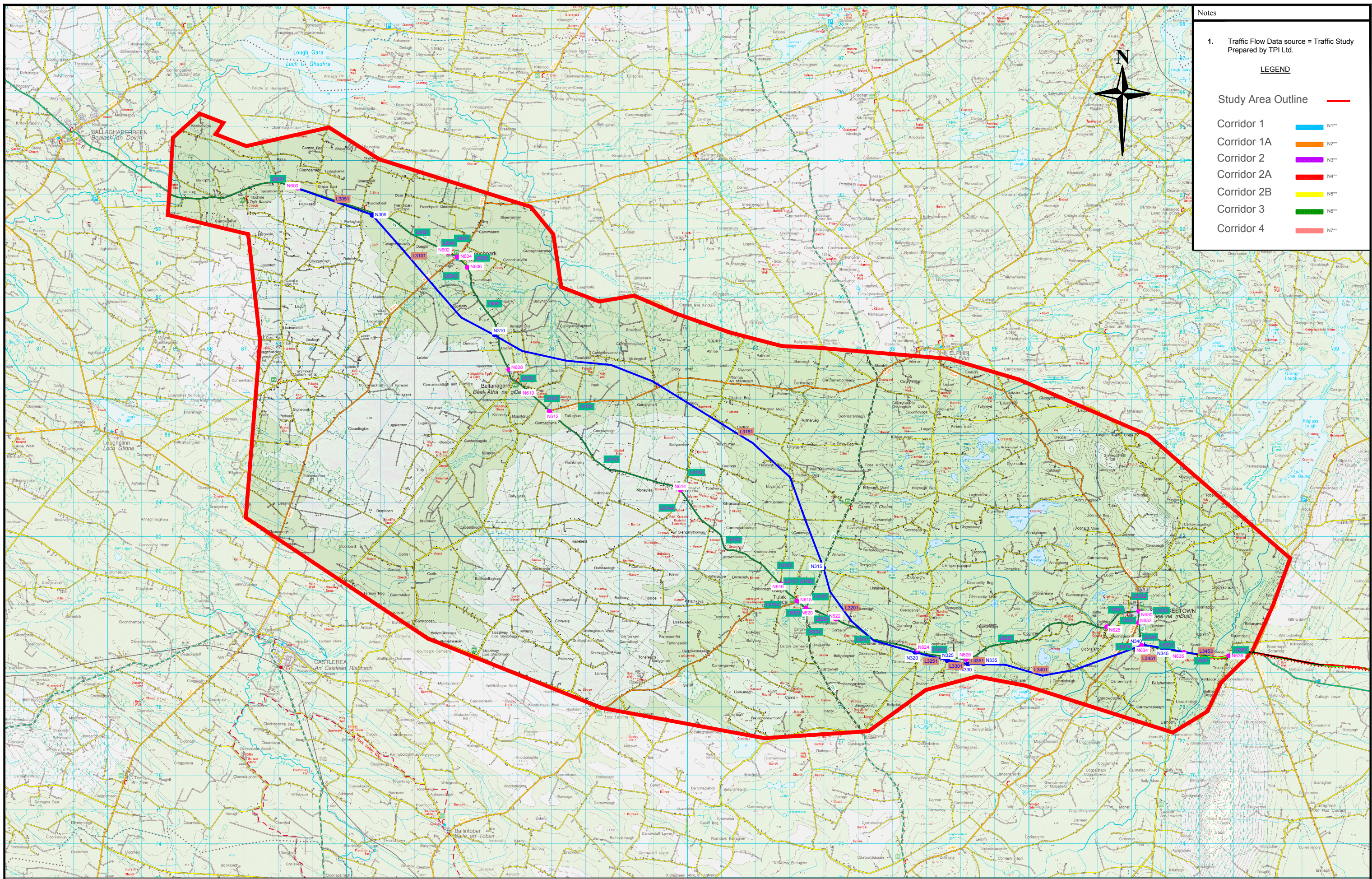
Martin Curley, B.E., C.Eng.,
Senior Engineer.

Rev	Description	Checked	Approved	Date
1	Post Peer Review			28/02/08

Project No. & Desc.
RN04250 N5 Strategic Corridor-Route Selection Report

Drawing Title
Economic Assessment - COBA Network - Option 1A

File Folder P:\Proj\2014\14155\14155-12-369\COBA_Network\14155-12-369\COBA_Network.dwg	Drawing No.: RN04250-12-369	Layout 2 of 7
Drawn Mark Keaveney	Scale V N/A	Date December 2007
	Scale H 1:100000	



Notes

1. Traffic Flow Data source = Traffic Study Prepared by TPI Ltd.

LEGEND

Study Area Outline —

Corridor 1 — N11"

Corridor 1A — N2"

Corridor 2 — N3"

Corridor 2A — N4"

Corridor 2B — N5"

Corridor 3 — N6"

Corridor 4 — N7"



ROSCOMMON COUNTY COUNCIL

Courthouse, Roscommon. Phone: 090-6637100

Majella Hunt Director of Services

NATIONAL ROADS DESIGN OFFICE ROSCOMMON

Racecourse Rd. Roscommon. Phone: 090 6627004

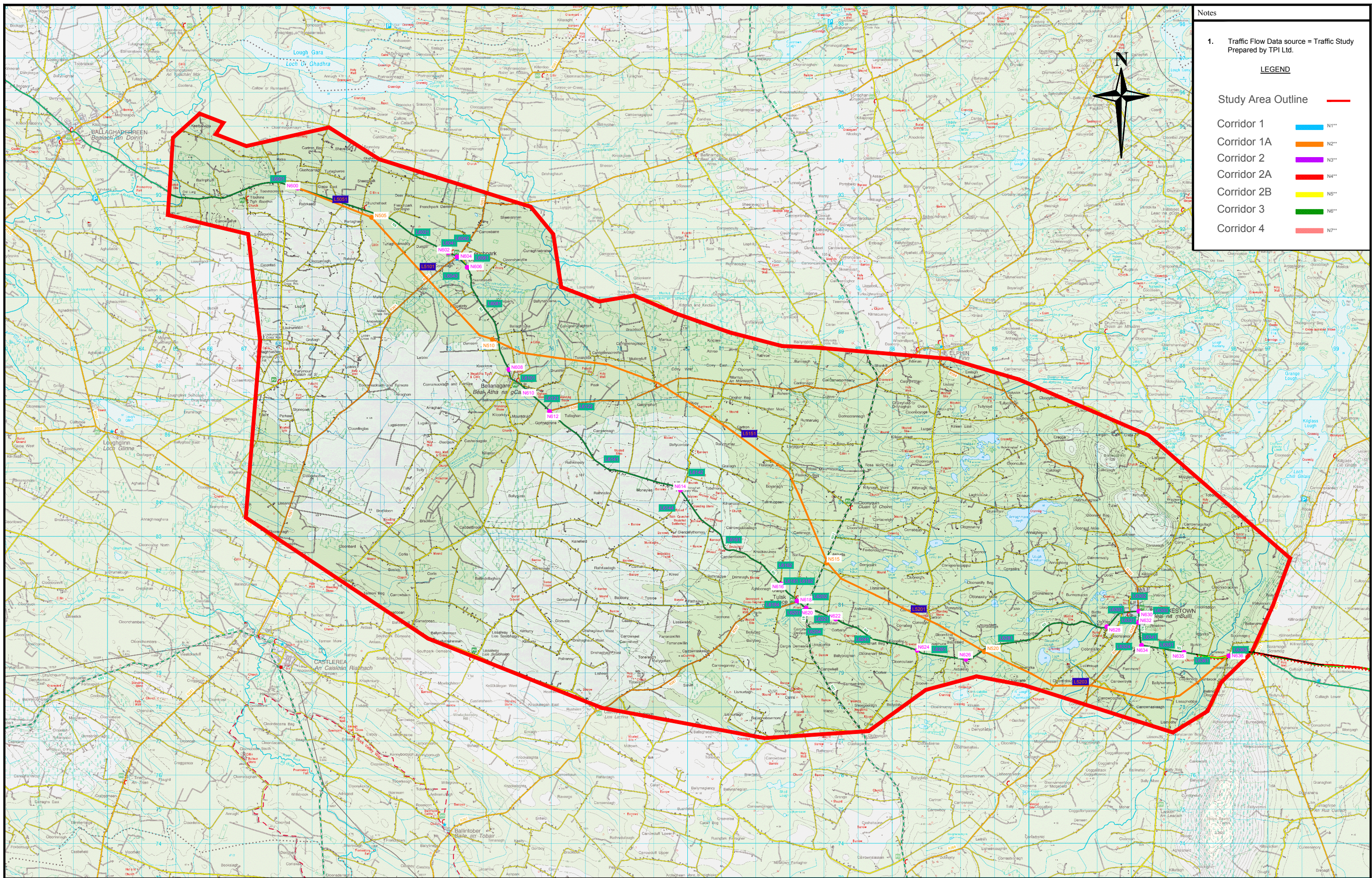
Martin Curley, B.E., C.Eng., Senior Engineer.

Rev	Description	Checked	Approved	Date
1	Post Peer Review			28/02/08

Project No. & Desc. **RN04250 N5 Strategic Corridor-Route Selection Report**

Drawing Title **Economic Assessment - COBA Network - Option 2**

File Folder P:\Proj\2014\14155\14155-1-BAE\04250\141 - RSR\Drawings\02 December 2017 14155-1-1-369 COBA Network.rdg	Drawing No.: RN04250-12-369	Layout 3 of 7
Drawn Mark Keaveney	Scale V N/A	Date December 2007
	Scale H 1:100000	



Notes

1. Traffic Flow Data source = Traffic Study Prepared by TPI Ltd.

LEGEND

Study Area Outline —

Corridor 1 — N1**

Corridor 1A — N2**

Corridor 2 — N3**

Corridor 2A — N4**

Corridor 2B — N5**

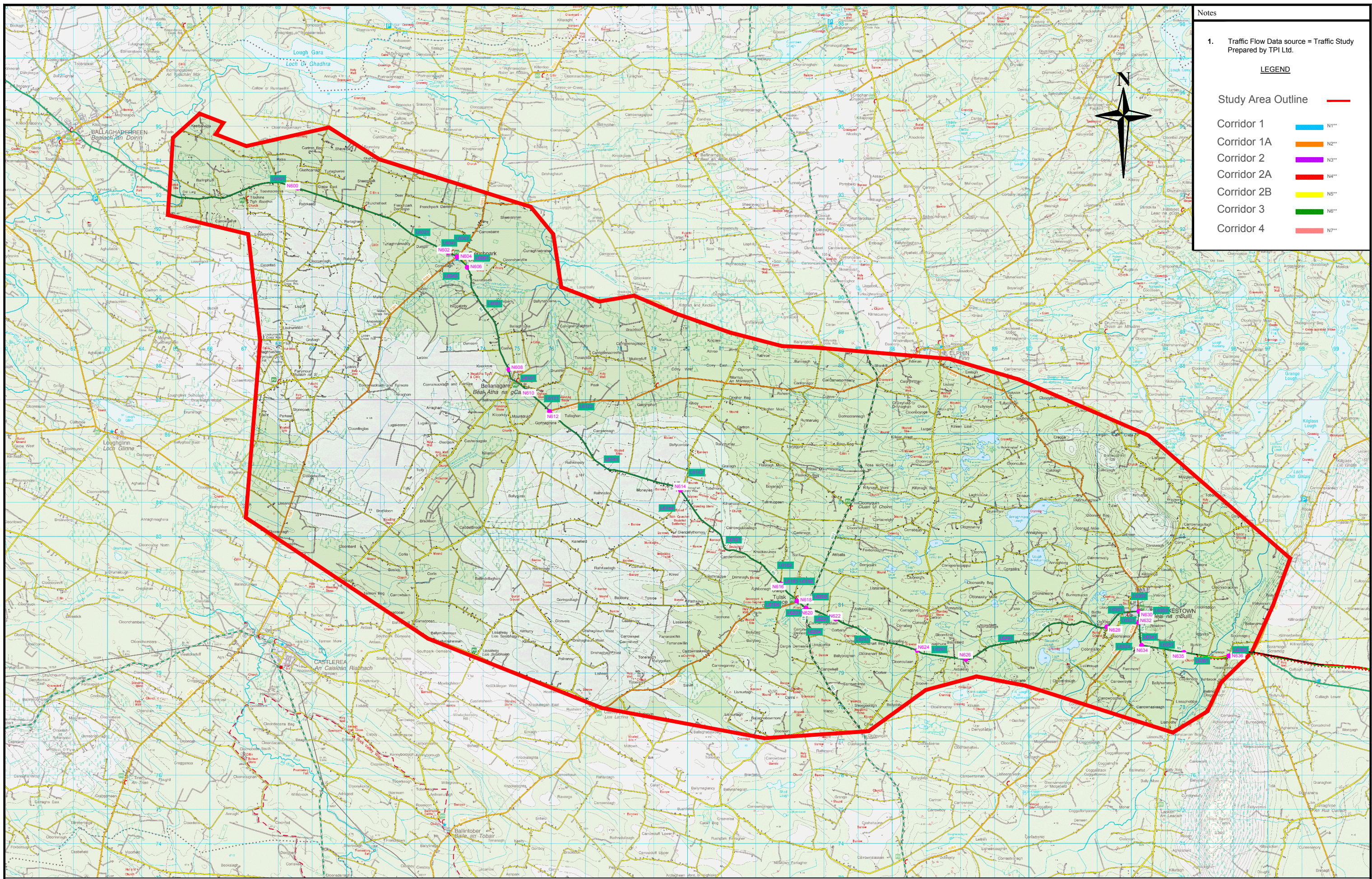
Corridor 3 — N6**

Corridor 4 — N7**



Rev	Description	Checked	Approved	Date
1	Post Peer Review			28/02/08

Project No. & Desc.		RN04250 N5 Strategic Corridor-Route Selection Report	
Drawing Title		Economic Assessment - COBA Network - Option 2B	
File Folder	Drawing No.: RN04250-12-369	Layout	5 of 7
Drawn	Mark Keaveney	Scale V	N/A
		Scale H	1:100000
		Date	December 2007



Notes

1. Traffic Flow Data source = Traffic Study Prepared by TPI Ltd.

LEGEND

- Study Area Outline —
- Corridor 1 — N1**
- Corridor 1A — N2**
- Corridor 2 — N3**
- Corridor 2A — N4**
- Corridor 2B — N5**
- Corridor 3 — N6**
- Corridor 4 — N7**

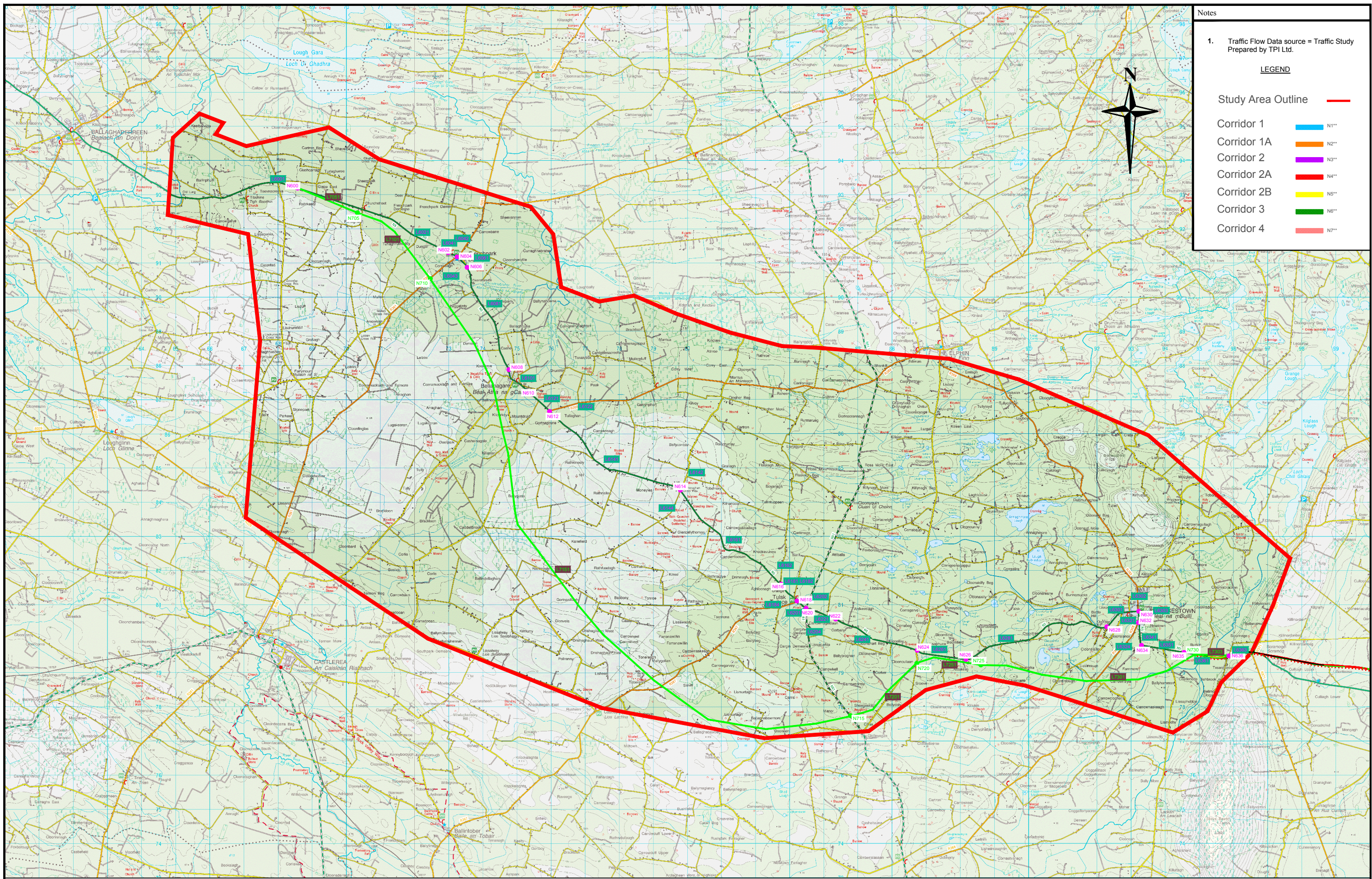



ROSCOMMON COUNTY COUNCIL
 Courthouse,
 Roscommon.
 Phone: 090-6637100
 Majella Hunt
 Director of Services


NATIONAL ROADS DESIGN OFFICE ROSCOMMON
 Racecourse Rd.
 Roscommon.
 Phone: 090 6627004
 Martin Curley, B.E., CEng.,
 Senior Engineer.

Rev	Description	Checked	Approved	Date
1	Post Peer Review			28/02/08

Project No. & Desc.
 RN04250 N5 Strategic Corridor-Route Selection Report
Economic Assessment - COBA Network - Option 3
Drawing Title
 File Folder P:\Proj2004\4155\4155-1-BAE\04250\311 - RSR\Drawings\RD0
 December 2007\RN04250-12-369 COBA Network.rdg
 Drawing No.: RN04250-12-369
 Scale V: N/A
 Scale H: 1:100000
 Layout: 6 of 7
 Date: December 2007
 Drawn: Mark Keaveney



Notes

- Traffic Flow Data source = Traffic Study Prepared by TPI Ltd.

LEGEND

Study Area Outline —

Corridor 1 — N1**

Corridor 1A — N2**

Corridor 2 — N3**

Corridor 2A — N4**

Corridor 2B — N5**

Corridor 3 — N6**

Corridor 4 — N7**



ROSCOMMON COUNTY COUNCIL

Courthouse, Roscommon. Phone: 090-6637100

Majella Hunt Director of Services

NATIONAL ROADS DESIGN OFFICE ROSCOMMON

Racecourse Rd. Roscommon. Phone: 090 6627004

Martin Curley, B.E., C.Eng., Senior Engineer.

Rev	Description	Checked	Approved	Date
1	Past Peer Review			28/02/08

Project No. & Desc. **RN04250 N5 Strategic Corridor-Route Selection Report**

Drawing Title **Economic Assessment - COBA Network - Option 4**

File Folder P:\Proj2004\14155\14155-1\RD\04250\14155-1-RS8\Drawings\RD04250-12-369-01-01-01-01.dwg	Drawing No.: RN04250-12-369	Layout	7 of 7
Drawn Mark Keaveney	Scale V 1:100000	Date	December 2007